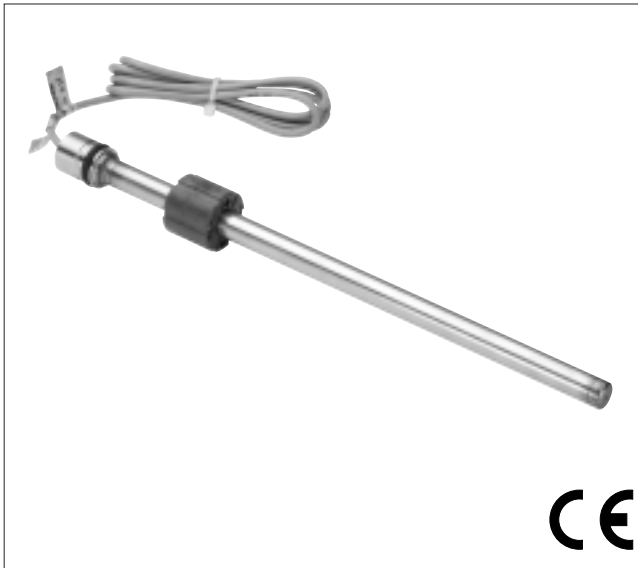


GEFRAN

PMI-SLE

RECTILINEAR DISPLACEMENT TRANSDUCER WITH MAGNETIC DRAG
(analog output)



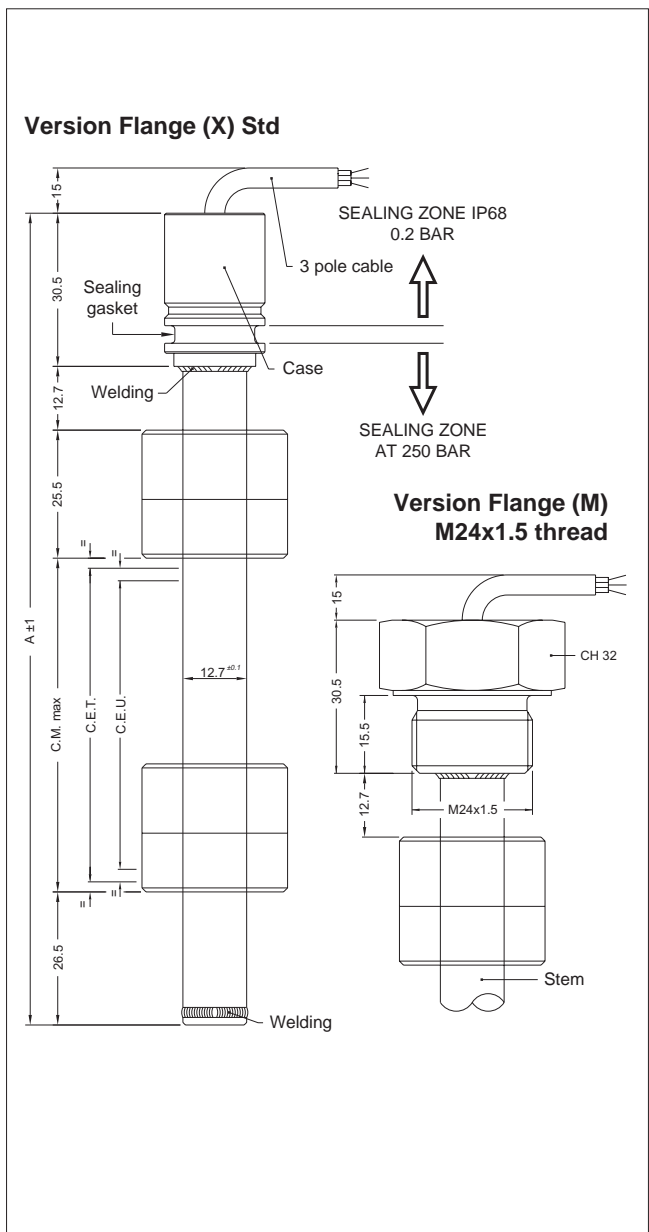
TECHNICAL DATA

Useful electrical stroke (C.E.U.)	50/100/150/200/250/300/350/400/450/500/550/600/750/800/850/900/950/1000
Independent linearity (within C.E.U.)	± 0.35%
Resolution	Infinite
Repeatability	≤ 0.08 mm
Hysteresis	< 250µm
Life	> 25x10 ⁶ m strokes, or > 100x10 ⁶ maneuvers, whichever is less
Displacement sensitivity (no hysteresis)	from 0.05 to 0.1 mm
Tracking error	see table
Displacement speed	standard ≤ 5 m/s
Max. acceleration	≤ 10m/s ² max displacement
Cursor dragging force	≤ 0.5 N
Vibrations	5...2000 Hz, Amax = 0.75 mm amax = 20 g
Shock	50 g, 11 ms
Power supply voltage	10...30Vdc (see the load diagram)
Max power consumption	35mA
Min load allowed	see the load diagram
Output signal	4...20 mA
- ZERO position (4mA):	between 1% and 3% of the C.E.U.
- SPAN position (20mA):	between 96% and 99% of the C.E.U.
Electrical connection	1 mt. 3-pole shielded cable
Sampling time	≤ 1 ms
Noise on output	< 0.08%FS RMS
Electrical isolation	> 100 MΩ at 45 Vdc = 1 bar, 2 s
Zero and FSO temperature drift	< 0.02%FS/°C
Polarity inversion protection	YES
Pulse overvoltage protection	YES
Working temperature	-30...+80°C
Storage temperature	-40...+100°C
Protection level	IP67
Material for transducer case	Steel AISI 316 / AISI 304

Applicative characteristics

- The PMI-SLE transducer, is the amplified version of the PMI-SL, a product designed for all inside cylinder applications which require a smaller transducer (the rod diameter is only 12,7 mm).
- The PMI Slim offers the same robustness as the PMI-12: AISI 316 stainless steel body, IP67 protection level, and pressure resistance up to 250 bar (400 bar peak)
- Available with flanged or threaded heads, to guarantee mechanical compatibility with all main cylinder types
- Patented solution
- Ideal for applications inside hydraulic cylinders, demanding simple solutions which guarantee measurement repeatability

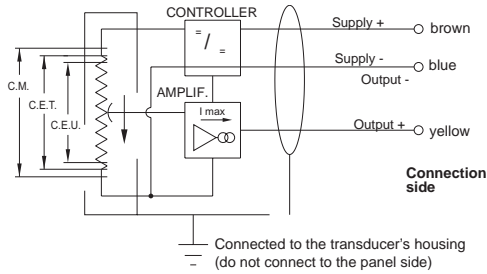
MECHANICAL DIMENSION



MECHANICAL / ELECTRICAL DATA

MODEL		50	100	150	200	250	300	350	400	450	500	550	600	750	800	850	900	950	1000
Useful electrical stroke (C.E.U.) + 1/-0	mm	Model																	
Theoretical electrical stroke (C.E.T.) ± 1	mm	C.E.U. + 1																	
Independent linearity (within C.E.U.)	± %	0.35																	
Mechanical stroke (C.M.)	mm	C.E.U. + 5																	
Lenght "A" ±1	mm	C.E.U. + 94.7																	

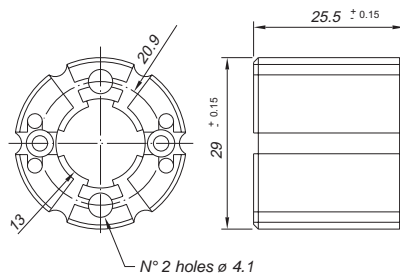
ELECTRICAL CONNECTIONS



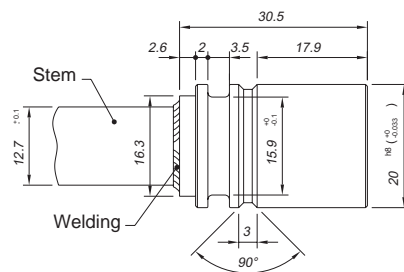
INSTALLATION INSTRUCTIONS

- Respect the indicated electrical connections
- When calibrating the transducer, be careful to set the stroke so that the output does not drop below 1% or rise beyond 99% of the 4/20mA output.

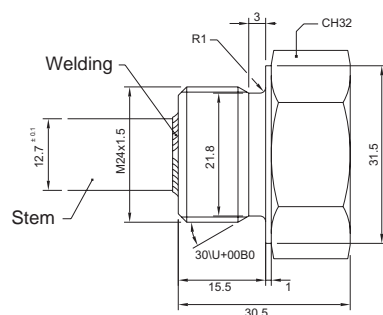
PCUR010 CURSOR



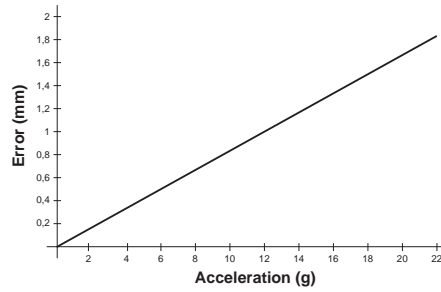
STANDARD FLANGE (X)



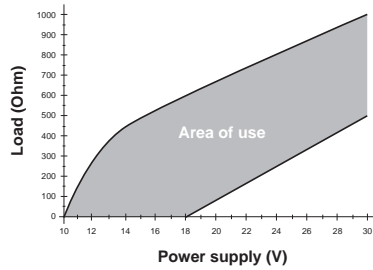
THREADED FLANGE (M)



TRACKING ERROR



LOAD DIAGRAM

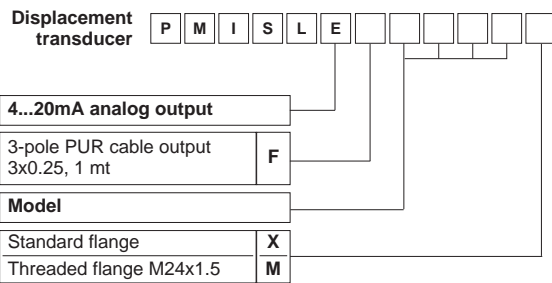


ACCESSORIES (series)

Standard magnetic cursor

PCUR010

ORDER CODE



0 0 0 0 X 0 0 0 X X X X X X X

No certificate attached 0
Linearity curve to be attached L

Version F cable length	
1 mt cable (standard)	00
2 mt cable	02
3 mt cable	03
4 mt cable	04
5 mt cable	05
10 mt cable	10
15 mt cable	15

Ex.: PMI-SLE-F-0400-X 0000X000XX00XXX

PMI SLE displacement transducer, 4...20mA analog output, useful electrical stroke (C.E.U.) 400mm, standard flange, no certificate attached, cable length 1 mt.

Sensors are manufactured in compliance with:

- EMC 2004/108/CE compatibility directive
- RoHS 2002/95/CE directive

Electrical installation requirements and Conformity certificate are available on our web site: www.gefran.com

GEFRAN spa reserves the right to make any kind of design or functional modification at any moment without prior notice.

GEFRAN

GEFRAN spa
via Sebina, 74
25050 PROVAGLIO D'ISEO (BS) - ITALIA
ph. 0309888.1 - fax. 0309839063
Internet: <http://www.gefran.com>

DTS_PMI-SLE_0709_ENG